

en

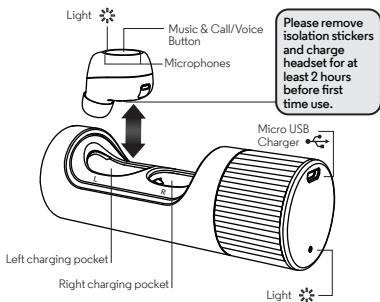
# VERVE ONES VERVE ONES+

Read me first

Check [www.verve.life](http://www.verve.life) for  
latest product QSG and details



# Your wireless earbuds and charge case



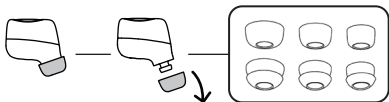
**Note:** Twist the case to open it. The case indicates which earbud is left and right. Left will be the master earbud and connect to your device, the right will automatically connect to the left.

Earbuds automatically turn on when removed from the case. They turn off and charge when placed back in the case.

# Step 1: Wear

## Best fit & best sound

Try **all** the gels to find the best fit and the best sound. The fit is right when you get a complete seal, the gel feels comfortable, and you get the best quality and loudest sound.



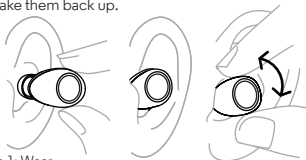
**Tip:** More than one gel size may fit you. Choose the one that completely seals your ear canal for the best sound.

**Note:** You may need different size gels for left and right.

## Wear

Insert the earbuds with the ear gel directed towards your ear canal. Twist gently until they fit comfortably and feel secure in your ear.

**Note:** When you take the earbuds out of the case, you have 5 minutes to put them on, or they go dormant. Put them in the case to wake them back up.



## Step 2: Pair with Bluetooth

1



Turn on Bluetooth on your device.

2



Take **both** wireless earbuds out of case, and put them in your ears.

3



On your device, go to the Bluetooth menu, select for VerveOnes or VerveOnes+, pair & connect. You will hear "Paired" when pairing is complete.

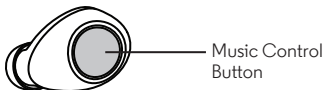
**Note:** Only the left earbud will connect to your device. The right will connect to the left. The left earbud may also be used as a single headset. Certain versions of this headset may only have tones and no voice prompts.

Some devices may request permission to access your contacts and call history. You may choose to allow or deny this request if you wish to have caller name readout

**Tip:** When you hear "Earbuds linked" both earbuds are connected for stereo use. When you hear "VerveOnes connected" your earbuds are connected to your device.

# Music

Start playing music on your music player and then control it with either earbud.



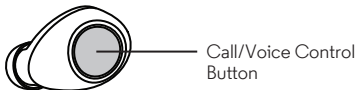
- Press once to pause a track. Press again to resume.
- Double-press to go to the next track (depending on your music player).
- Triple-press to go back one track (or start the song over).
- Press and hold until you to hear the Equalizer options (between 3-6 seconds). Press again to select a preferred setting.

**Note:** Playing the next or previous track depends on your music player or app.

**Tip:** With Ear Detect ON (Default), if you take one earbud out of your ear, music will continue to play. If you take out both earbuds from your ears they will disconnect from the device. Earbuds will power off after 5 minutes, if not put back in your ears.

# Calls & Voice Commands

When making and answering calls or using voice commands, you can press either earbud.



- Press once to answer an incoming call, or double-press to reject it. You may also say “Answer” or “Ignore” for an incoming phone call if prompted
- Press once to end a call.
- When not in a call and not playing music, press and hold to start voice commands. You'll hear a tone. Release the button. You'll hear a second tone from your phone. Say your command. (Press and hold again to cancel a voice command.)

**Note:** All calls will be heard in the left earbud only.

Voice commands use your phone's voice control app and may not be available in all countries.

**Tip:** When Ear Detect is ON, a call will automatically transfer to the phone when **both** earbuds are removed.

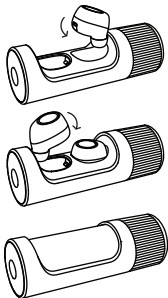
When Ear Detect is OFF, a call will remain in the headset until transferred to the phone via phone keypad.

# Charge

## Charge the earbuds

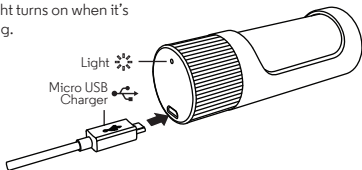
Put the earbuds into the case and press them firmly until you hear a click and the earbud lights turn on. Twist the case until it's completely closed.

**Tip:** Earbuds are designed to be a snug fit in the case. You may need to push earbuds from the side to remove.



## Charge the case

Charge the case and earbuds by plugging in the charging cable. The case light turns on when it's charging.



# Charge level

Your earbuds let you know when your battery level is low. You'll hear a message when there is 15 minutes of battery left.

## Earbud status lights

Charging	Slow blinking white
Full charge	Steady white
Needs charging	Blinking red

**Note:** The earbud lights turn on briefly, then turn off to conserve battery. The earbuds will continue to charge until full.

## Case status lights

When your case is plugged into a wall charger, you'll see charging lights.

Charging	Slow blinking white
Full charge	Steady white
Needs charging	Blinking red

**Note:** Your battery is designed to last the life of the product. It should only be removed by a recycling facility. Any attempt to remove or replace your battery will damage the product and void your warranty.



# Hubble Connect™ for VerveLife™

Hubble Connect for VerveLife can greatly enhance your earbud experience. Download app for free at the App Store® or Google Play™ (Android™ 4.4.4 or higher)

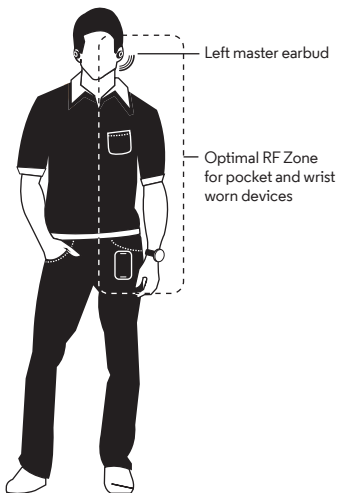
- **Locate a lost earbud:** Locate on a map the last time your earbud was connected to your device.
- **Adjust the equalizer:** Choose from six preset sound profiles, so your tunes sound the way you like.
- **Pass-Through Audio (default OFF):** Stay in tune with your surroundings by turning Pass-Through on to hear noises around you.
- **Ear Detect (default ON):** When Ear Detect is on, the earbud automatically turns on when it detects it is in your ear and turns off when both earbuds are removed from your ears.  
When Ear Detect is off, earbuds will remain on when connected to your device until you put them in the case.
- **Voice Prompts:** Choose a new language for Voice Prompts from the available selection.
- **Help:** Get answers.

**Note:** Both earbuds must be in the case to make changes to these settings via the app (Does not apply for the location or help feature).

Application feature may change over time, please download the latest version of the app to see all current features supported.

# Get best connection

To optimise bluetooth connection and minimize drops, keep your device in the optimal RF zone.



# Use this product responsibly

VerveOnes are designed to give the user great sounding wireless earbuds. However the product should be used responsibly.

## Safety instructions for use

To avoid hearing damage, keep the volume at a moderate level. Avoid listening to music at loud volume levels for prolonged periods of time as this may cause permanent hearing damage or hearing loss.

Your hearing is delicate and highly sensitive so please listen to your music responsibly. For more information visit the Deafness Research Foundation [www.drf.org](http://www.drf.org)

Don't use VerveOnes when it is unsafe to do so. For example, while operating a vehicle, cycling, crossing a road, or any activity which requires your attention and ability to hear. You should be aware of your surroundings and use VerveOnes responsibly.

# Help & more

- **Get help:** Visit [www.motorolahome.com/support](http://www.motorolahome.com/support) or visit [www.verve.life](http://www.verve.life) for help videos, FAQ's and more.
- **Find accessories at:** [www.motorolahome.com](http://www.motorolahome.com) or [www.verve.life](http://www.verve.life)

**Note:** If you're watching video while using your earbuds, your audio may be slightly out of sync with your video.

Manufactured, distributed, or sold by Binatone Electronics International LTD., official licensee for this product. MOTOROLA and the Stylized M Logo are trademarks or registered trademarks of Motorola Trademark Holdings, LLC. and are used under license. Apple logo is a trademark of Apple Inc., registered in the U.S. and other countries. App Store is a service mark of Apple Inc. Google Play and Android are trademarks of Google Inc. All other trademarks are the property of their respective owners.  
© 2016 Motorola Mobility LLC. All rights reserved.

Product ID: SH001  
Bluetooth ID: D029680  
FCC ID: VLJ-SH001  
IC ID: 4522A-SH001